



Expert

# ICD-10-CM Expert for Hospitals

**The complete official guidelines and code set**

Codes valid from October 1, 2026  
through September 30, 2027

SAMPLE

2027



optumcoding.com

# Contents

<b>How to Use ICD-10-CM Expert for Hospitals 2027 .....</b>	<b>iii</b>	Chapter 12. Diseases of the Skin and Subcutaneous Tissue (L00–L99) .....	747
Introduction .....	iii	Chapter 13. Diseases of the Musculoskeletal System and Connective Tissue (M00–M99) .....	769
What’s New for 2027 .....	iii	Chapter 14. Diseases of Genitourinary System (N00–N99).....	857
Conversion Table .....	iii	Chapter 15. Pregnancy, Childbirth, and the Puerperium (O00–O9A) .....	879
10 Steps to Correct Coding .....	iii	Chapter 16. Certain Conditions Originating in the Perinatal Period (P00–P96) .....	919
Official ICD-10-CM Guidelines for Coding and Reporting .....	iii	Chapter 17. Congenital Malformations, Deformations, and Chromosomal Abnormalities (Q00–Q99) .....	933
Indexes .....	iii	Chapter 18. Symptoms, Signs, and Abnormal Clinical and Laboratory Findings, Not Elsewhere Classified (R00–R99) .....	955
Index to Diseases and Injuries .....	iii	Chapter 19. Injury, Poisoning, and Certain Other Consequences of External Causes (S00–T88) .....	977
Neoplasm Table .....	iii	Chapter 20. External Causes of Morbidity (V00–Y99) .....	1193
Table of Drugs and Chemicals .....	iii	Chapter 21. Factors Influencing Health Status and Contact with Health Services (Z00–Z99) .....	1259
External Causes Index .....	iv	Chapter 22. Codes for Special Purposes (U00–U85).....	1299
Index Notations .....	iv	<b>Appendixes .....</b>	<b>Appendixes–1</b>
Tabular List of Diseases .....	v	Appendix A: Valid 3-character ICD-10-CM Codes.....	Appendixes–1
Code and Code Descriptions .....	v	Appendix B: Pharmacology List 2027.....	Appendixes–3
Tabular Notations .....	v	Appendix C: Z Codes for Long-Term Drug Use with Associated Drugs.....	Appendixes–18
Official Notations .....	v	Appendix D: Major Complication and Comorbidity (MCC) Code List.....	Appendixes–20
Optum Notations .....	vi	Appendix E: Complication and Comorbidity (CC) Code List .....	Appendixes–24
Icons .....	vi	Appendix F: Present on Admission (POA) Tutorial .....	Appendixes–38
Color Bars .....	vii	Appendix G: Hospital Acquired Conditions.....	Appendixes–41
Chapter-Level Notations .....	viii	Appendix H: Centers for Medicare & Medicaid Services Hierarchical Condition Categories (CMS-HCC).....	Appendixes–63
Appendixes .....	viii	<b>Illustrations .....</b>	<b>Illustrations–1</b>
Illustrations .....	viii	Chapter 3. Diseases of the Blood and Blood-forming Organs and Certain Disorders Involving the Immune Mechanism (D50–D89) .....	Illustrations–1
<b>What’s New for 2027 .....</b>	<b>ix</b>	Red Blood Cells .....	Illustrations–1
Official Updates .....	ix	White Blood Cell .....	Illustrations–1
Proprietary Updates .....	ix	Platelet .....	Illustrations–2
<b>Conversion Table of ICD-10-CM Codes .....</b>	<b>x</b>	Coagulation .....	Illustrations–2
<b>10 Steps to Correct Coding .....</b>	<b>xii</b>	Spleen Anatomical Location and External Structures .....	Illustrations–3
<b>ICD-10-CM Official Guidelines for Coding and Reporting .....</b>	<b>Coding Guidelines–1</b>	Spleen Interior Structures .....	Illustrations–3
<b>ICD-10-CM Index to Diseases and Injuries .....</b>	<b>1</b>	Chapter 4. Endocrine, Nutritional, and Metabolic Diseases (E00–E89) .....	Illustrations–4
<b>ICD-10-CM Neoplasm Table .....</b>	<b>339</b>	Endocrine System .....	Illustrations–4
<b>ICD-10-CM Table of Drugs and Chemicals .....</b>	<b>358</b>	Thyroid .....	Illustrations–5
<b>ICD-10-CM Index to External Causes.....</b>	<b>408</b>	Thyroid and Parathyroid Glands .....	Illustrations–5
<b>ICD-10-CM Tabular List of Diseases and Injuries .....</b>	<b>445</b>	Pancreas .....	Illustrations–6
Chapter 1. Certain Infectious and Parasitic Diseases (A00–B99), U07.1, U09.9 .....	445	Anatomy of the Adrenal Gland .....	Illustrations–6
Chapter 2. Neoplasms (C00–D49) .....	471	Structure of an Ovary .....	Illustrations–7
Chapter 3. Diseases of the Blood and Blood-forming Organs and Certain Disorders Involving the Immune Mechanism (D50–D89) .....	513	Testis and Associated Structures .....	Illustrations–7
Chapter 4. Endocrine, Nutritional, and Metabolic Diseases (E00–E89) .....	527	Thymus .....	Illustrations–8
Chapter 5. Mental, Behavioral and Neurodevelopmental Disorders (F01–F99) .....	551		
Chapter 6. Diseases of the Nervous System (G00–G99) .....	583		
Chapter 7. Diseases of the Eye and Adnexa (H00–H59) .....	607		
Chapter 8. Diseases of the Ear and Mastoid Process (H60–H95) .....	645		
Chapter 9. Diseases of the Circulatory System (I00–I99) .....	657		
Chapter 10. Diseases of the Respiratory System (J00–J99), U07.0 .....	703		
Chapter 11. Diseases of the Digestive System (K00–K95) .....	721		

Chapter 6. Diseases of the Nervous System (G00–G99) .. Illustrations–9	Chapter 11. Diseases of the Digestive System (K00–K95) ..... Illustrations–29
Brain ..... Illustrations–9	Digestive System ..... Illustrations–29
Cranial Nerves ..... Illustrations–9	Omentum and Mesentery ..... Illustrations–30
Peripheral Nervous System ..... Illustrations–10	Peritoneum and Retroperitoneum ..... Illustrations–30
Spinal Cord and Spinal Nerves ..... Illustrations–11	
Nerve Cell ..... Illustrations–12	Chapter 12. Diseases of the Skin and Subcutaneous Tissue (L00–L99) ..... Illustrations–31
Trigeminal and Facial Nerve Branches ..... Illustrations–12	Nail Anatomy ..... Illustrations–31
	Skin and Subcutaneous Tissue ..... Illustrations–31
Chapter 7. Diseases of the Eye and Adnexa (H00–H59) ..... Illustrations–13	Chapter 13. Diseases of the Musculoskeletal System and Connective Tissue (M00–M99) ..... Illustrations–32
Eye ..... Illustrations–13	Bones and Joints ..... Illustrations–32
Posterior Pole of Globe/Flow of Aqueous Humor ..... Illustrations–13	Shoulder Anterior View ..... Illustrations–33
Lacrimal System ..... Illustrations–14	Shoulder Posterior View ..... Illustrations–33
Eye Musculature ..... Illustrations–14	Elbow Anterior View ..... Illustrations–33
Eyelid Structures ..... Illustrations–14	Elbow Posterior View ..... Illustrations–33
	Hand ..... Illustrations–33
Chapter 8. Diseases of the Ear and Mastoid Process (H60–H95) ..... Illustrations–15	Hip Anterior View ..... Illustrations–34
Ear Anatomy ..... Illustrations–15	Hip Posterior View ..... Illustrations–34
	Knee Anterior View ..... Illustrations–34
Chapter 9. Diseases of the Circulatory System (I00–I99) ..... Illustrations–16	Knee Posterior View ..... Illustrations–34
Anatomy of the Heart ..... Illustrations–16	Foot ..... Illustrations–34
Heart Cross Section ..... Illustrations–16	Muscles ..... Illustrations–35
Heart Valves ..... Illustrations–17	
Heart Conduction System ..... Illustrations–17	Chapter 14. Diseases of Genitourinary System (N00–N99) ..... Illustrations–36
Coronary Arteries ..... Illustrations–18	Urinary System ..... Illustrations–36
Arteries ..... Illustrations–19	Male Genitourinary System ..... Illustrations–37
Veins ..... Illustrations–20	Female Internal Genitalia ..... Illustrations–37
Internal Carotid and Vertebral Arteries and Branches ..... Illustrations–21	Female Genitourinary Tract Lateral View ..... Illustrations–37
External Carotid Artery and Branches ..... Illustrations–21	Chapter 15. Pregnancy, Childbirth, and the Puerperium (O00–O9A) ..... Illustrations–38
Branches of Abdominal Aorta ..... Illustrations–22	Term Pregnancy – Single Gestation ..... Illustrations–38
Portal Venous Circulation ..... Illustrations–22	Twin Gestation–Dichorionic–Diamniotic (DI-DI) ..... Illustrations–38
Lymphatic System ..... Illustrations–23	Twin Gestation–Monochorionic–Diamniotic (MO-DI) ..... Illustrations–39
Axillary Lymph Nodes ..... Illustrations–24	Twin Gestation–Monochorionic–Monoamniotic (MO-MO) ..... Illustrations–39
Lymphatic System of Head and Neck ..... Illustrations–24	
Lymphatic Capillaries ..... Illustrations–25	Chapter 19. Injury, Poisoning, and Certain Other Consequences of External Causes (S00–T88) ..... Illustrations–40
Lymphatic Drainage ..... Illustrations–25	Types of Fractures ..... Illustrations–40
Chapter 10. Diseases of the Respiratory System (J00–J99), U07.0 ..... Illustrations–26	Salter-Harris Fracture Types ..... Illustrations–40
Respiratory System ..... Illustrations–26	
Upper Respiratory System ..... Illustrations–27	
Lower Respiratory System ..... Illustrations–27	
Paranasal Sinuses ..... Illustrations–27	
Lung Segments ..... Illustrations–28	
Alveoli ..... Illustrations–28	

**A Adult Age: 15-124**

These diagnoses are intended for patients between the age of 15 and 124 years.

**R54 Age-related physical debility**

Frailty  
Old age  
Senescence  
Senile asthenia  
Senile debility

**EXCLUDES1** *age-related cognitive decline (R41.81)  
sarcopenia (M62.84)  
senile psychosis (F03.-)  
senility NOS (R41.81)*

**Sex Edits**

Effective October 1, 2024, the Medicare Code Editor (MCE), a program used to detect and report errors in coding claims data, has deactivated the sex conflict edit. There is no longer a female or male edit restriction for ICD-10-CM codes.

**H1 - H14 Hospital Acquired Condition (HAC)**

These icons identify codes that are high-cost and/or high-volume (CC or MCC), that when assigned as a secondary diagnosis result in assignment of a case to a higher-paying MS-DRG. The condition or diagnosis represented by these codes is considered reasonably preventable through the application of evidence-based guidelines. If the condition is not present on admission (meaning it developed during the hospital admission), the case will not group to the higher-paying MS-DRG based solely upon the reporting of the HAC code. Many of these HACs are conditional and are based on reporting the specific diagnosis code(s) in combination with certain procedure codes.

A comprehensive list of all HAC codes that coincide with these icons appears in appendix G, at the back of this book.

**Note:** Hospital-acquired conditions do not impact MS-LTC-DRG assignment.

**N15.1 Renal and perinephric abscess****CC Condition**

This icon identifies a complication or comorbidity diagnosis that may affect DRG assignment. A complication or comorbidity diagnosis, CC condition, is defined as a significant acute disease, a significant acute manifestation of a chronic disease, an advanced or end-stage chronic disease, or a chronic disease associated with systemic physiological decompensation and debility that have consistently greater impact on hospital resources.

A comprehensive list of ICD-10-CM codes considered a CC appears in appendix E, at the back of this book.

**G90.59 Complex regional pain syndrome I of other specified site****MCC Condition**

This icon identifies a major complication or comorbidity diagnosis that may affect DRG assignment. An MCC condition meets the same criteria as a CC condition but is associated with a higher acuity level and hospital resource consumption is expected to be higher than that for a CC condition. There are fewer conditions that meet the criteria as an MCC than those for a CC condition.

A comprehensive list of ICD-10-CM codes considered an MCC appears in appendix D, at the back of this book.

**J04.11 Acute tracheitis with obstruction**

**Note:** The assignment of an MS-DRG or MS-LTC-DRG often depends on the presence or absence of a secondary diagnosis code that is designated as an MCC or CC. However, in some instances the MCC

or CC designation for that secondary diagnosis code is negated due to its relationship with the principal diagnosis; this is referred to as CC exclusion. The ICD-10 MS-DRG Definitions Manual included with the IPPS final rule provides a list of all principal diagnosis codes that would render ineffective the MCC/CC designation for a particular ICD-10-CM code when used as a secondary diagnosis. Optum has provided this CC exclusion list in an easily searchable data file, which can be accessed at the following:

<https://www.optumcoding.com/ProductUpdates/>  
Title: "2025 ICD-10-CM for Hospitals CC Excludes Data File"  
Password: HOSPITAL25

**UNS Unspecified Site**

This icon identifies codes that are considered an MCC or CC but lack specificity in regard to their anatomical location. The medical record documentation should be reviewed carefully, to ensure that no other code within the same category or subcategory can be assigned for greater specificity.

**G81.00 Flaccid hemiplegia affecting unspecified side****UPD Unacceptable Principal Diagnosis**

This icon identifies codes that should not be assigned as principal diagnosis for *inpatient* admissions. Codes with an unacceptable principal diagnosis edit are considered supplementary — describing circumstances that influence an individual's health status or an additional code — identifying conditions that are not specific manifestations but may be due to an underlying cause.

**T48.5X5 Adverse effect of other anti-common-cold drugs****HIV HIV-related Condition**

This icon identifies codes that are considered a major HIV-related diagnosis. When the condition is coded in combination with a diagnosis of human immunodeficiency virus (HIV), code B20, the case will move from MS-DRG/MS-LTC-DRG 977 to MS-DRGs/MS-LTC-DRGs 974-976.

**G96.9 Disorder of central nervous system, unspecified****PE Present on Admission Exempt**

This icon identifies codes that do not require a present on admission (POA) indicator. These codes are considered exempt because they do not represent a current disease or injury or describe conditions that are always present on admission

**B90.1 Sequelae of genitourinary tuberculosis****HCC CMS-HCC Condition**

This icon identifies codes that are included in the CMS-HCC risk-adjustment model.

**P29.0 Neonatal cardiac failure**  
Code also associated underlying condition**Color Bars****Manifestation Code**

Codes defined as manifestation codes appear in italic type, with a blue color bar over the code description. A manifestation cannot be reported as a first-listed code; it is sequenced as a secondary diagnosis with the underlying disease code listed first.

**G32.89 Other specified degenerative disorders of nervous system in diseases classified elsewhere**  
Degenerative encephalopathy in diseases classified elsewhere

# ICD-10-CM Index to Diseases and Injuries

## A

**Aarskog's syndrome** Q87.19

**Abandonment** — see Maltreatment

**Abasia** (-astasia) (hysterical) F44.4

**Abderhalden-Kaufmann-Lignac syndrome** (cystinosis) E72.04

**Abdomen, abdominal** — see also condition

acute R10.0

angina K55.1

muscle deficiency syndrome Q79.4

**Abdominalgia** — see Pain, abdominal

**Abduction contracture, hip or other joint** — see Contraction, joint

**Aberrant** (congenital) — see also Malposition, congenital

adrenal gland Q89.1

artery (peripheral) Q27.8

basilar NEC Q28.1

cerebral Q28.3

coronary Q24.5

digestive system Q27.8

eye Q15.8

lower limb Q27.8

precerebral Q28.1

pulmonary Q25.79

renal Q27.2

retina Q14.1

specified site NEC Q27.8

subclavian Q27.8

upper limb Q27.8

vertebral Q28.1

breast Q83.8

endocrine gland NEC Q89.2

hepatic duct Q44.5

pancreas Q45.3

parathyroid gland Q89.2

pituitary gland Q89.2

sebaceous glands, mucous membrane, mouth, congenital Q38.6

spleen Q89.09

subclavian artery Q27.8

thymus (gland) Q89.2

thyroid gland Q89.2

vein (peripheral) NEC Q27.8

cerebral Q28.3

digestive system Q27.8

lower limb Q27.8

precerebral Q28.1

specified site NEC Q27.8

upper limb Q27.8

**Aberration**

distantal — see Disturbance, visual

mental F99

**Abetalipoproteinemia** E78.6

**Abiotrophy** R68.89

**Ablatio, ablation**

retinae — see Detachment, retina

**Ablepharia, ablepharon** Q10.3

**Abnormal, abnormality, abnormalities** — see also

Anomaly

acid-base balance (mixed) E87.4

albumin R77.0

alphafetoprotein R77.2

alveolar ridge K08.9

anatomical relationship Q89.9

apertures, congenital, diaphragm Q79.1

atrial septal, specified NEC Q21.19

auditory perception H93.29- ✓

diplacusis — see Diplacusis

hyperacusis — see Hyperacusis

recruitment — see Recruitment, auditory

threshold shift — see Shift, auditory threshold

autosomes Q99.9

fragile site Q95.5

basal metabolic rate R94.8

biosynthesis, testicular androgen E29.1

bleeding time R79.1

blood amino-acid level R79.83

blood level (of)

cobalt R79.0

copper R79.0

iron R79.0

**Abnormal, abnormality, abnormalities** — continued

blood level — continued

lithium R78.89

magnesium R79.0

mineral NEC R79.0

zinc R79.0

blood pressure

elevated R03.0

low reading (nonspecific) R03.1

blood sugar R73.09

blood-gas level R79.81

bowel sounds R19.15

absent R19.11

hyperactive R19.12

brain scan R94.02

breathing R06.9

caloric test R94.138

cerebrospinal fluid R83.9

cytology R83.6

drug level R83.2

enzyme level R83.0

hormones R83.1

immunology R83.4

microbiology R83.5

nonmedicinal level R83.3

specified type NEC R83.8

chemistry, blood R79.9

C-reactive protein R79.82

drugs — see Findings, abnormal, in blood

gas level R79.81

minerals R79.0

pancytopenia D61.818

PTT R79.1

specified NEC R79.89

toxins — see Findings, abnormal, in blood

chest sounds (friction) (rales) R09.89

chromosome, chromosomal Q99.9

with more than three X chromosomes, female Q97.1

analysis result R89.8

bronchial washings R84.8

cerebrospinal fluid R83.8

cervix uteri NEC R87.89

nasal secretions R84.8

nipple discharge R89.8

peritoneal fluid R85.89

pleural fluid R84.8

prostatic secretions R86.8

saliva R85.89

seminal fluid R86.8

sputum R84.8

synovial fluid R89.8

throat scrapings R84.8

vagina R87.89

vulva R87.89

wound secretions R89.8

dicentric replacement Q93.2

ring replacement Q93.2

sex Q99.8

female phenotype Q97.9

specified NEC Q97.8

male phenotype Q98.9

specified NEC Q98.8

structural male Q98.6

specified NEC Q99.8

clinical findings NEC R68.89

coagulation D68.9

newborn, transient P61.6

profile R79.1

time R79.1

communication — see Fistula

conjunctiva, vascular H11.41- ✓

coronary artery Q24.5

cortisol-binding globulin E27.8

course, eustachian tube Q17.8

creatinine clearance R94.4

cytology

anus R85.619

atypical squamous cells cannot exclude high grade

squamous intraepithelial lesion (ASC-H)

R85.611

atypical squamous cells of undetermined signifi-

cance (ASC-US) R85.610

cytologic evidence of malignancy R85.614

**Abnormal, abnormality, abnormalities** — continued

cytology — continued

anus — continued

high grade squamous intraepithelial lesion (HGSIL)

R85.613

human papillomavirus (HPV) DNA test

high risk positive R85.81

low risk positive R85.82

inadequate smear R85.615

low grade squamous intraepithelial lesion (LGSIL)

R85.612

satisfactory anal smear but lacking transformation

zone R85.616

specified NEC R85.618

unsatisfactory smear R85.615

female genital organs — see Abnormal, Papanicolaou (smear)

dark adaptation curve H53.61

dentofacial NEC — see Anomaly, dentofacial

development, developmental Q89.9

central nervous system Q07.9

diagnostic imaging

abdomen, abdominal region NEC R93.5

biliary tract R93.2

bladder R93.41

breast R92.8

central nervous system NEC R90.89

cerebrovascular NEC R90.89

coronary circulation R93.1

digestive tract NEC R93.3

gastrointestinal (tract) R93.3

genitourinary organs R93.89

head R93.0

heart R93.1

intrathoracic organ NEC R93.89

kidney R93.42- ✓

limbs R93.6

liver R93.2

lung (field) R91.8

musculoskeletal system NEC R93.7

renal pelvis R93.41

retroperitoneum R93.5

site specified NEC R93.89

skin and subcutaneous tissue R93.89

skull R93.0

testis R93.81- ✓

ureter R93.41

urinary organs specified NEC R93.49

direction, teeth, fully erupted M26.30

ear ossicles, acquired NEC H74.39- ✓

ankylosis — see Ankylosis, ear ossicles

discontinuity — see Discontinuity, ossicles, ear

partial loss — see Loss, ossicles, ear (partial)

Ebstein Q22.5

echocardiogram R93.1

echoencephalogram R90.81

echogram — see Abnormal, diagnostic imaging

electrocardiogram [ECG] [EKG] R94.31

electroencephalogram [EEG] R94.01

electrolyte — see Imbalance, electrolyte

electromyogram [EMG] R94.131

electro-oculogram [EOG] R94.110

electrophysiological intracardiac studies R94.39

electroretinogram [ERG] R94.111

erythrocytes

congenital, with perinatal jaundice D58.9

feces (color) (contents) (mucus) R19.5

finding — see Findings, abnormal, without diagnosis

fluid

amniotic — see Abnormal, specimen, specified

cerebrospinal — see Abnormal, cerebrospinal fluid

peritoneal — see Abnormal, specimen, digestive or-

gans

pleural — see Abnormal, specimen, respiratory organs

synovial — see Abnormal, specimen, specified

thorax (bronchial washings) (pleural fluid) — see Ab-

normal, specimen, respiratory organs

vaginal — see Abnormal, specimen, female genital

organs

form

teeth K00.2

uterus — see Anomaly, uterus



	Malignant Primary	Malignant Secondary	Ca in situ	Benign	Uncertain Behavior	Unspecified Behavior		Malignant Primary	Malignant Secondary	Ca in situ	Benign	Uncertain Behavior	Unspecified Behavior
<b>Neoplasm, neoplastic</b> — continued							<b>Neoplasm, neoplastic</b> — continued						
brain — continued							bronchus — continued						
basal ganglia	C71.0	C79.31	—	D33.0	D43.0	D49.6	main	C34.0-✓	C78.0-✓	D02.2-✓	D14.3-✓	D38.1	D49.1
cerebellopontine angle	C71.6	C79.31	—	D33.1	D43.1	D49.6	middle lobe of lung	C34.2	C78.0-✓	D02.21	D14.31	D38.1	D49.1
cerebellum NOS	C71.6	C79.31	—	D33.1	D43.1	D49.6	overlapping lesion	C34.8-✓	—	—	—	—	—
cerebrum	C71.0	C79.31	—	D33.0	D43.0	D49.6	upper lobe of lung	C34.1-✓	C78.0-✓	D02.2-✓	D14.3-✓	D38.1	D49.1
choroid plexus	C71.7	C79.31	—	D33.1	D43.1	D49.6	brow	C44.309	C79.2	D04.39	D23.39	D48.5	D49.2
corpus callosum	C71.8	C79.31	—	D33.2	D43.2	D49.6	basal cell carcinoma	C44.319	—	—	—	—	—
corpus striatum	C71.0	C79.31	—	D33.0	D43.0	D49.6	specified type NEC	C44.399	—	—	—	—	—
cortex (cerebral)	C71.0	C79.31	—	D33.0	D43.0	D49.6	squamous cell carcinoma	C44.329	—	—	—	—	—
frontal lobe	C71.1	C79.31	—	D33.0	D43.0	D49.6	buccal (cavity)	C06.9	C79.89	D00.00	D10.39	D37.09	D49.0
globus pallidus	C71.0	C79.31	—	D33.0	D43.0	D49.6	commissure	C06.0	C79.89	D00.02	D10.39	D37.09	D49.0
hippocampus	C71.2	C79.31	—	D33.0	D43.0	D49.6	groove (lower)	C06.1	C79.89	D00.02	D10.39	D37.09	D49.0
hypothalamus	C71.0	C79.31	—	D33.0	D43.0	D49.6	(upper)	C06.0	C79.89	D00.02	D10.39	D37.09	D49.0
internal capsule	C71.0	C79.31	—	D33.0	D43.0	D49.6	mucosa	C06.0	C79.89	D00.02	D10.39	D37.09	D49.0
medulla							sulcus (lower)	C06.1	C79.89	D00.02	D10.39	D37.09	D49.0
oblongata	C71.7	C79.31	—	D33.1	D43.1	D49.6	(upper)	C06.1	C79.89	D00.02	D10.39	D37.09	D49.0
meninges	C70.0	C79.32	—	D32.0	D42.0	D49.7	bulbourethral gland	C68.0	C79.19	D09.19	D30.4	D41.3	D49.59
midbrain	C71.7	C79.31	—	D33.1	D43.1	D49.6	bursa — see Neoplasm, connective tissue						
occipital lobe	C71.4	C79.31	—	D33.0	D43.0	D49.6	buttock NEC	C76.3	C79.89	D04.5	D36.7	D48.7	D49.89
overlapping lesion	C71.8	C79.31	—	—	—	—	calif	C76.5-✓	C79.89	D04.7-✓	D36.7	D48.7	D49.89
parietal lobe	C71.3	C79.31	—	D33.0	D43.0	D49.6	calvarium	C41.0	C79.51	—	D16.4	D48.0	D49.2
peduncle	C71.7	C79.31	—	D33.1	D43.1	D49.6	calyx, renal canal	C65.1-✓	C79.0-✓	D09.19	D30.1-✓	D41.1-✓	D49.51-✓
pons	C71.7	C79.31	—	D33.1	D43.1	D49.6	anal	C21.1	C78.5	D01.3	D12.9	D37.8	D49.0
stem	C71.7	C79.31	—	D33.1	D43.1	D49.6	auditory (external) — see also Neoplasm, skin, ear						
tapetum	C71.8	C79.31	—	D33.2	D43.2	D49.6	auricular (external) — see also Neoplasm, skin, ear	C44.20-✓	C79.2	D04.2-✓	D23.2-✓	D48.5	D49.2
temporal lobe	C71.2	C79.31	—	D33.0	D43.0	D49.6	canaliculi, biliary (biliferi)	C44.20-✓	C79.2	D04.2-✓	D23.2-✓	D48.5	D49.2
thalamus	C71.0	C79.31	—	D33.0	D43.0	D49.6	(intrahepatic)	C22.1	C78.7	D01.5	D13.4	D37.6	D49.0
uncus	C71.2	C79.31	—	D33.0	D43.0	D49.6	canthus (eye) (inner)	C44.10-✓	C79.2	D04.1-✓	D23.1-✓	D48.5	D49.2
ventricle (floor)	C71.5	C79.31	—	D33.0	D43.0	D49.6	(outer)	C44.11-✓	—	—	—	—	—
fourth	C71.7	C79.31	—	D33.1	D43.1	D49.6	basal cell carcinoma	C44.13-✓	—	—	—	—	—
branchial (left) (cyst) (vestiges)	C10.4	C79.89	D00.08	D10.5	D37.05	D49.0	sebaceous cell	C44.19-✓	—	—	—	—	—
breast (connective tissue) (glandular tissue) (soft parts)	C50.9-✓	C79.81	D05.1-✓	D24.1-✓	D48.6-✓	D49.3	specified type NEC	C44.12-✓	—	—	—	—	—
areola	C50.0-✓	C79.81	D05.1-✓	D24.1-✓	D48.6-✓	D49.3	squamous cell carcinoma						
axillary tail	C50.6-✓	C79.81	D05.1-✓	D24.1-✓	D48.6-✓	D49.3	capillary — see Neoplasm, connective tissue						
central portion	C50.1-✓	C79.81	D05.1-✓	D24.1-✓	D48.6-✓	D49.3	caput coli	C18.0	C78.5	D01.0	D12.0	D37.4	D49.0
inner	C50.8-✓	C79.81	D05.1-✓	D24.1-✓	D48.6-✓	D49.3	carcinoid — see Tumor, carcinoid						
lower	C50.8-✓	C79.81	D05.1-✓	D24.1-✓	D48.6-✓	D49.3	cardia (gastric)	C16.0	C78.89	D00.2	D13.1	D37.1	D49.0
lower-inner quadrant	C50.3-✓	C79.81	D05.1-✓	D24.1-✓	D48.6-✓	D49.3	cardiac orifice (stomach)	C16.0	C78.89	D00.2	D13.1	D37.1	D49.0
lower-outer quadrant	C50.5-✓	C79.81	D05.1-✓	D24.1-✓	D48.6-✓	D49.3	cardio-esophageal junction	C16.0	C78.89	D00.2	D13.1	D37.1	D49.0
mastectomy site (skin) — see also Neoplasm, breast, skin	C44.501	C79.2	—	—	—	—	cardio-esophagus carina (bronchus)	C34.0-✓	C78.0-✓	D02.2-✓	D14.3-✓	D38.1	D49.1
specified as breast tissue	C50.8-✓	C79.81	—	—	—	—	carotid (artery)	C49.0	C79.89	—	D21.0	D48.1	D49.2
midline	C50.8-✓	C79.81	D05.1-✓	D24.1-✓	D48.6-✓	D49.3	body	C75.4	C79.89	—	D35.5	D44.6	D49.7
nipple	C50.0-✓	C79.81	D05.1-✓	D24.1-✓	D48.6-✓	D49.3	carpus (any bone)	C40.1-✓	C79.51	—	D16.1-✓	—	—
outer	C50.8-✓	C79.81	D05.1-✓	D24.1-✓	D48.6-✓	D49.3	cartilage (articular) (joint) NEC — see also Neoplasm, bone						
overlapping lesion	C50.8-✓	—	—	—	—	—	arytenoid	C41.9	C79.51	—	D16.9	D48.0	D49.2
skin	C44.501	C79.2	D04.5	D23.5	D48.5	D49.2	auricular	C32.3	C78.39	D02.0	D14.1	D38.0	D49.1
basal cell carcinoma	C44.511	—	—	—	—	—	bronchi	C49.0	C79.89	—	D21.0	D48.1	D49.2
specified type NEC	C44.591	—	—	—	—	—	costal	C34.0-✓	C78.39	—	D14.3-✓	D38.1	D49.1
squamous cell carcinoma	C44.521	—	—	—	—	—	cricoid	C41.3	C79.51	—	D16.7	D48.0	D49.2
tail (axillary)	C50.6-✓	C79.81	D05.1-✓	D24.1-✓	D48.6-✓	D49.3	cuneiform	C32.3	C78.39	D02.0	D14.1	D38.0	D49.1
upper	C50.8-✓	C79.81	D05.1-✓	D24.1-✓	D48.6-✓	D49.3	ear (external)	C32.3	C78.39	D02.0	D14.1	D38.0	D49.1
upper-inner quadrant	C50.2-✓	C79.81	D05.1-✓	D24.1-✓	D48.6-✓	D49.3	ensiform	C49.0	C79.89	—	D21.0	D48.1	D49.2
upper-outer quadrant	C50.4-✓	C79.81	D05.1-✓	D24.1-✓	D48.6-✓	D49.3	epiglottis	C41.3	C79.51	—	D16.7	D48.0	D49.2
broad ligament	C57.1-✓	C79.82	D07.39	D28.2	D39.8	D49.59		C32.1	C78.39	D02.0	D14.1	D38.0	D49.1
bronchiogenic, bronchogenic (lung)	C34.9-✓	C78.0-✓	D02.2-✓	D14.3-✓	D38.1	D49.1							
bronchiole	C34.9-✓	C78.0-✓	D02.2-✓	D14.3-✓	D38.1	D49.1							
bronchus	C34.9-✓	C78.0-✓	D02.2-✓	D14.3-✓	D38.1	D49.1							
carina	C34.0-✓	C78.0-✓	D02.2-✓	D14.3-✓	D38.1	D49.1							
lower lobe of lung	C34.3-✓	C78.0-✓	D02.2-✓	D14.3-✓	D38.1	D49.1							

Substance	Poisoning, Accidental (unintentional)	Poisoning, Intentional Self-harm	Poisoning, Assault	Poisoning, Undetermined	Adverse Effect	Under-dosing	Substance	Poisoning, Accidental (unintentional)	Poisoning, Intentional Self-harm	Poisoning, Assault	Poisoning, Undetermined	Adverse Effect	Under-dosing
<b>Androstalolone</b>	T38.7X1	T38.7X2	T38.7X3	T38.7X4	T38.7X5	T38.7X6	<b>Anthilimine</b>	T37.4X1	T37.4X2	T37.4X3	T37.4X4	T37.4X5	T37.4X6
<b>Androstanolone</b>	T38.7X1	T38.7X2	T38.7X3	T38.7X4	T38.7X5	T38.7X6	<b>Anthrallin</b>	T49.4X1	T49.4X2	T49.4X3	T49.4X4	T49.4X5	T49.4X6
<b>Androsterone</b>	T38.7X1	T38.7X2	T38.7X3	T38.7X4	T38.7X5	T38.7X6	<b>Anthracycline</b>	T45.1X1	T45.1X2	T45.1X3	T45.1X4	T45.1X5	T45.1X6
<b>Anemone pulsatilla</b>	T62.2X1	T62.2X2	T62.2X3	T62.2X4	—	—	<b>Antidiabetic drug NEC</b>	T44.8X1	T44.8X2	T44.8X3	T44.8X4	T44.8X5	T44.8X6
<b>Anesthesia</b>							<b>Antiallergic drug NEC</b>	T45.0X1	T45.0X2	T45.0X3	T45.0X4	T45.0X5	T45.0X6
caudal	T41.3X1	T41.3X2	T41.3X3	T41.3X4	T41.3X5	T41.3X6	<b>Antianginal drug NEC</b>	T38.6X1	T38.6X2	T38.6X3	T38.6X4	T38.6X5	T38.6X6
endotracheal	T41.0X1	T41.0X2	T41.0X3	T41.0X4	T41.0X5	T41.0X6	<b>Anti-anemic (drug) (preparation)</b>	T45.8X1	T45.8X2	T45.8X3	T45.8X4	T45.8X5	T45.8X6
epidural	T41.3X1	T41.3X2	T41.3X3	T41.3X4	T41.3X5	T41.3X6	<b>Antianxiety drug NEC</b>	T43.501	T43.502	T43.503	T43.504	T43.505	T43.506
inhalation	T41.0X1	T41.0X2	T41.0X3	T41.0X4	T41.0X5	T41.0X6	<b>Antiarthritis drug NEC</b>	T65.891	T65.892	T65.893	T65.894	—	—
local	T41.3X1	T41.3X2	T41.3X3	T41.3X4	T41.3X5	T41.3X6	<b>Antiartherosclerotic drug</b>	T46.6X1	T46.6X2	T46.6X3	T46.6X4	T46.6X5	T46.6X6
mucosal	T41.3X1	T41.3X2	T41.3X3	T41.3X4	T41.3X5	T41.3X6	<b>Antiasthmatic drug NEC</b>	T48.6X1	T48.6X2	T48.6X3	T48.6X4	T48.6X5	T48.6X6
muscle relaxation	T48.1X1	T48.1X2	T48.1X3	T48.1X4	T48.1X5	T48.1X6	<b>Antibiotic Otic Suspension (Solution)*</b>	T49.6X1	T49.6X2	T49.6X3	T49.6X4	T49.6X5	T49.6X6
nerve blocking	T41.3X1	T41.3X2	T41.3X3	T41.3X4	T41.3X5	T41.3X6	<b>Antibiotic NEC</b>	T36.91	T36.92	T36.93	T36.94	T36.95	T36.96
plexus blocking	T41.3X1	T41.3X2	T41.3X3	T41.3X4	T41.3X5	T41.3X6	aminoglycoside	T36.5X1	T36.5X2	T36.5X3	T36.5X4	T36.5X5	T36.5X6
potentiated	T41.201	T41.202	T41.203	T41.204	T41.205	T41.206	antibacterial	T45.1X1	T45.1X2	T45.1X3	T45.1X4	T45.1X5	T45.1X6
rectal	T41.201	T41.202	T41.203	T41.204	T41.205	T41.206	antifungal	T36.7X1	T36.7X2	T36.7X3	T36.7X4	T36.7X5	T36.7X6
general	T41.201	T41.202	T41.203	T41.204	T41.205	T41.206	antimycobacterial	T36.5X1	T36.5X2	T36.5X3	T36.5X4	T36.5X5	T36.5X6
local	T41.3X1	T41.3X2	T41.3X3	T41.3X4	T41.3X5	T41.3X6	antineoplastic	T45.1X1	T45.1X2	T45.1X3	T45.1X4	T45.1X5	T45.1X6
regional	T41.3X1	T41.3X2	T41.3X3	T41.3X4	T41.3X5	T41.3X6	b-lactam NEC	T36.1X1	T36.1X2	T36.1X3	T36.1X4	T36.1X5	T36.1X6
surface	T41.3X1	T41.3X2	T41.3X3	T41.3X4	T41.3X5	T41.3X6	cephalosporin (group)	T36.1X1	T36.1X2	T36.1X3	T36.1X4	T36.1X5	T36.1X6
<b>Anesthetic NEC — see also</b>	T41.41	T41.42	T41.43	T41.44	T41.45	T41.46	chloramphenicol (group)	T36.2X1	T36.2X2	T36.2X3	T36.2X4	T36.2X5	T36.2X6
Anesthesia							ENT	T49.6X1	T49.6X2	T49.6X3	T49.6X4	T49.6X5	T49.6X6
with muscle relaxant	T41.201	T41.202	T41.203	T41.204	T41.205	T41.206	eye	T49.5X1	T49.5X2	T49.5X3	T49.5X4	T49.5X5	T49.5X6
general	T41.201	T41.202	T41.203	T41.204	T41.205	T41.206	fungicidal (local)	T49.0X1	T49.0X2	T49.0X3	T49.0X4	T49.0X5	T49.0X6
local	T41.3X1	T41.3X2	T41.3X3	T41.3X4	T41.3X5	T41.3X6	intestinal	T36.8X1	T36.8X2	T36.8X3	T36.8X4	T36.8X5	T36.8X6
gaseous NEC	T41.0X1	T41.0X2	T41.0X3	T41.0X4	T41.0X5	T41.0X6	local	T49.0X1	T49.0X2	T49.0X3	T49.0X4	T49.0X5	T49.0X6
general NEC	T41.201	T41.202	T41.203	T41.204	T41.205	T41.206	macrolides	T36.3X1	T36.3X2	T36.3X3	T36.3X4	T36.3X5	T36.3X6
halogenated hydrocarbon derivatives NEC	T41.0X1	T41.0X2	T41.0X3	T41.0X4	T41.0X5	T41.0X6	polypeptide specified NEC	T36.8X1	T36.8X2	T36.8X3	T36.8X4	T36.8X5	T36.8X6
infiltration NEC	T41.3X1	T41.3X2	T41.3X3	T41.3X4	T41.3X5	T41.3X6	tetracycline (group)	T36.8X1	T36.8X2	T36.8X3	T36.8X4	T36.8X5	T36.8X6
intravenous NEC	T41.1X1	T41.1X2	T41.1X3	T41.1X4	T41.1X5	T41.1X6	throat	T49.6X1	T49.6X2	T49.6X3	T49.6X4	T49.6X5	T49.6X6
local NEC	T41.3X1	T41.3X2	T41.3X3	T41.3X4	T41.3X5	T41.3X6	<b>Anticancer agents NEC</b>	T45.1X1	T45.1X2	T45.1X3	T45.1X4	T45.1X5	T45.1X6
rectal	T41.201	T41.202	T41.203	T41.204	T41.205	T41.206	<b>Anticholesterolemic drug NEC</b>	T46.6X1	T46.6X2	T46.6X3	T46.6X4	T46.6X5	T46.6X6
general	T41.201	T41.202	T41.203	T41.204	T41.205	T41.206	<b>Anticholinergic NEC</b>	T44.3X1	T44.3X2	T44.3X3	T44.3X4	T44.3X5	T44.3X6
local	T41.3X1	T41.3X2	T41.3X3	T41.3X4	T41.3X5	T41.3X6	<b>Anticholinesterase</b>	T44.0X1	T44.0X2	T44.0X3	T44.0X4	T44.0X5	T44.0X6
regional NEC	T41.3X1	T41.3X2	T41.3X3	T41.3X4	T41.3X5	T41.3X6	organophosphorus insecticide	T44.0X1	T44.0X2	T44.0X3	T44.0X4	T44.0X5	T44.0X6
thiobarbiturate	T41.1X1	T41.1X2	T41.1X3	T41.1X4	T41.1X5	T41.1X6	nerve gas	T60.0X1	T60.0X2	T60.0X3	T60.0X4	—	—
topical	T41.3X1	T41.3X2	T41.3X3	T41.3X4	T41.3X5	T41.3X6	reversible	T59.891	T59.892	T59.893	T59.894	—	—
<b>Aneurine</b>	T45.2X1	T45.2X2	T45.2X3	T45.2X4	T45.2X5	T45.2X6	ophthalmological	T44.0X1	T44.0X2	T44.0X3	T44.0X4	T44.0X5	T44.0X6
<b>Angeliq*</b>	T38.5X1	T38.5X2	T38.5X3	T38.5X4	T38.5X5	T38.5X6	<b>Anticoagulant NEC</b>	T49.5X1	T49.5X2	T49.5X3	T49.5X4	T49.5X5	T49.5X6
<b>Angio-Conray</b>	T50.8X1	T50.8X2	T50.8X3	T50.8X4	T50.8X5	T50.8X6	Antagonist	T45.511	T45.512	T45.513	T45.514	T45.515	T45.516
<b>Angiotensin</b>	T44.5X1	T44.5X2	T44.5X3	T44.5X4	T44.5X5	T44.5X6	<b>Anti-common-cold drug NEC</b>	T45.7X1	T45.7X2	T45.7X3	T45.7X4	T45.7X5	T45.7X6
<b>Angiotensinamide</b>	T44.991	T44.992	T44.993	T44.994	T44.995	T44.996	<b>Anticonvulsant</b>	T48.5X1	T48.5X2	T48.5X3	T48.5X4	T48.5X5	T48.5X6
<b>Anhydrohydroxy-progesterone</b>	T38.5X1	T38.5X2	T38.5X3	T38.5X4	T38.5X5	T38.5X6	barbiturate	T42.71	T42.72	T42.73	T42.74	T42.75	T42.76
<b>Anhydron</b>	T50.2X1	T50.2X2	T50.2X3	T50.2X4	T50.2X5	T50.2X6	combination (with barbiturate)	T42.3X1	T42.3X2	T42.3X3	T42.3X4	T42.3X5	T42.3X6
<b>Anilidine</b>	T40.491	T40.492	T40.493	T40.494	T40.495	T40.496	hydantoin	T42.0X1	T42.0X2	T42.0X3	T42.0X4	T42.0X5	T42.0X6
<b>Aniline (dye) (liquid)</b>	T65.3X1	T65.3X2	T65.3X3	T65.3X4	—	—	hypnotic NEC	T42.6X1	T42.6X2	T42.6X3	T42.6X4	T42.6X5	T42.6X6
analgesic	T39.1X1	T39.1X2	T39.1X3	T39.1X4	T39.1X5	T39.1X6	oxazolindione	T42.2X1	T42.2X2	T42.2X3	T42.2X4	T42.2X5	T42.2X6
derivatives, therapeutic	T39.1X1	T39.1X2	T39.1X3	T39.1X4	T39.1X5	T39.1X6	pyrimidinone	T42.6X1	T42.6X2	T42.6X3	T42.6X4	T42.6X5	T42.6X6
NEC	—	—	—	—	—	—	specified NEC	T42.2X1	T42.2X2	T42.2X3	T42.2X4	T42.2X5	T42.2X6
vapor	T65.3X1	T65.3X2	T65.3X3	T65.3X4	—	—	succinimide	T43.201	T43.202	T43.203	T43.204	T43.205	T43.206
<b>Anisocorpine</b>	T44.3X1	T44.3X2	T44.3X3	T44.3X4	T44.3X5	T44.3X6	<b>Antidepressant</b>	T43.1X1	T43.1X2	T43.1X3	T43.1X4	T43.1X5	T43.1X6
<b>Anise oil</b>	T47.5X1	T47.5X2	T47.5X3	T47.5X4	T47.5X5	T47.5X6	monoamine oxidase inhibitor	T43.211	T43.212	T43.213	T43.214	T43.215	T43.216
<b>Anisidine</b>	T65.3X1	T65.3X2	T65.3X3	T65.3X4	—	—	selective serotonin reuptake inhibitor	T43.221	T43.222	T43.223	T43.224	T43.225	T43.226
<b>Anisindione</b>	T45.511	T45.512	T45.513	T45.514	T45.515	T45.516	specified NEC	T43.291	T43.292	T43.293	T43.294	T43.295	T43.296
<b>Anisotropine</b>	T44.3X1	T44.3X2	T44.3X3	T44.3X4	T44.3X5	T44.3X6	tetracyclic	T43.021	T43.022	T43.023	T43.024	T43.025	T43.026
<b>methyl-bromide</b>	—	—	—	—	—	—	triazolopyridine	T43.211	T43.212	T43.213	T43.214	T43.215	T43.216
<b>Anistreplase</b>	T45.611	T45.612	T45.613	T45.614	T45.615	T45.616	tricyclic	T43.011	T43.012	T43.013	T43.014	T43.015	T43.016
<b>Anorexiant (central)</b>	T50.5X1	T50.5X2	T50.5X3	T50.5X4	T50.5X5	T50.5X6	<b>Antidiabetic drug NEC</b>	T38.3X1	T38.3X2	T38.3X3	T38.3X4	T38.3X5	T38.3X6
<b>Anorexic agents</b>	T50.5X1	T50.5X2	T50.5X3	T50.5X4	T50.5X5	T50.5X6	biguanide	T38.3X1	T38.3X2	T38.3X3	T38.3X4	T38.3X5	T38.3X6
<b>Ansaid*</b>	T39.311	T39.312	T39.313	T39.314	T39.315	T39.316	and sulfonyl combined	T38.3X1	T38.3X2	T38.3X3	T38.3X4	T38.3X5	T38.3X6
<b>Ansamycin</b>	T36.6X1	T36.6X2	T36.6X3	T36.6X4	T36.6X5	T36.6X6	combined	T38.3X1	T38.3X2	T38.3X3	T38.3X4	T38.3X5	T38.3X6
<b>Ant (bite) (sting)</b>	T63.421	T63.422	T63.423	T63.424	—	—	sulfonylurea	T38.3X1	T38.3X2	T38.3X3	T38.3X4	T38.3X5	T38.3X6
<b>Antabuse</b>	T50.6X1	T50.6X2	T50.6X3	T50.6X4	T50.6X5	T50.6X6	<b>Antidiarrheal drug NEC</b>	T47.6X1	T47.6X2	T47.6X3	T47.6X4	T47.6X5	T47.6X6
<b>Antacid NEC</b>	T47.1X1	T47.1X2	T47.1X3	T47.1X4	T47.1X5	T47.1X6	absorbent	T47.6X1	T47.6X2	T47.6X3	T47.6X4	T47.6X5	T47.6X6
<b>Antagonist</b>							<b>Anti-D immunoglobulin (human)</b>	T50.211	T50.212	T50.213	T50.214	T50.215	T50.216
Aldosterone	T50.0X1	T50.0X2	T50.0X3	T50.0X4	T50.0X5	T50.0X6	<b>Antidiphtheria serum</b>	T50.211	T50.212	T50.213	T50.214	T50.215	T50.216
alpha-adrenoreceptor	T44.6X1	T44.6X2	T44.6X3	T44.6X4	T44.6X5	T44.6X6	<b>Antidiuretic hormone</b>	T38.891	T38.892	T38.893	T38.894	T38.895	T38.896
anticoagulant	T45.7X1	T45.7X2	T45.7X3	T45.7X4	T45.7X5	T45.7X6	<b>Antidote NEC</b>	T50.6X1	T50.6X2	T50.6X3	T50.6X4	T50.6X5	T50.6X6
beta-adrenoreceptor	T44.7X1	T44.7X2	T44.7X3	T44.7X4	T44.7X5	T44.7X6	heavy metal	T45.8X1	T45.8X2	T45.8X3	T45.8X4	T45.8X5	T45.8X6
extrapyramidal NEC	T44.3X1	T44.3X2	T44.3X3	T44.3X4	T44.3X5	T44.3X6	<b>Antidysrhythmic NEC</b>	T46.2X1	T46.2X2	T46.2X3	T46.2X4	T46.2X5	T46.2X6
folic acid	T45.1X1	T45.1X2	T45.1X3	T45.1X4	T45.1X5	T45.1X6							
H2 receptor	T47.0X1	T47.0X2	T47.0X3	T47.0X4	T47.0X5	T47.0X6							
heavy metal	T45.8X1	T45.8X2	T45.8X3	T45.8X4	T45.8X5	T45.8X6							
narcotic analgesic	T50.7X1	T50.7X2	T50.7X3	T50.7X4	T50.7X5	T50.7X6							
opiate	T50.7X1	T50.7X2	T50.7X3	T50.7X4	T50.7X5	T50.7X6							
pyrimidine	T45.1X1	T45.1X2	T45.1X3	T45.1X4	T45.1X5	T45.1X6							
serotonin	T46.5X1	T46.5X2	T46.5X3	T46.5X4	T46.5X5	T46.5X6							
<b>Antazolin (e)</b>	T45.0X1	T45.0X2	T45.0X3	T45.0X4	T45.0X5	T45.0X6							
<b>Anterior pituitary hormone</b>	T38.811	T38.812	T38.813	T38.814	T38.815	T38.816							
<b>NEC</b>													
<b>Anthelmintic NEC</b>	T37.4X1	T37.4X2	T37.4X3	T37.4X4	T37.4X5	T37.4X6							

## Chapter 2. Neoplasms (C00–D49)

### Chapter-specific Guidelines with Coding Examples

The chapter-specific guidelines from the ICD-10-CM Official Guidelines for Coding and Reporting have been provided below. Along with these guidelines are coding examples, contained in the shaded boxes, that have been developed to help illustrate the coding and/or sequencing guidance found in these guidelines.

#### General guidelines

Chapter 2 of the ICD-10-CM contains the codes for most benign and all malignant neoplasms. Certain benign neoplasms, such as prostatic adenomas, may be found in the specific body system chapters. To properly code a neoplasm, it is necessary to determine from the record if the neoplasm is benign, in-situ, malignant, or of uncertain histologic behavior. If malignant, any secondary (metastatic) sites should also be determined.

Primary malignant neoplasms overlapping site boundaries

A primary malignant neoplasm that overlaps two or more contiguous (next to each other) sites should be classified to the subcategory/code .8 ('overlapping lesion'), unless the combination is specifically indexed elsewhere. For multiple neoplasms of the same site that are not contiguous such as tumors in different quadrants of the same breast, codes for each site should be assigned.

A 73-year-old white female with a large rapidly growing malignant tumor in the left breast extending from the upper outer quadrant into the axillary tail

**C50.812 Malignant neoplasm of overlapping sites of left female breast**

*Explanation:* Because this is a single large tumor that overlaps two contiguous sites, a single code for overlapping sites is assigned.

A 52-year old white female with two distinct lesions of the right breast, one (0.5 cm) in the upper outer quadrant and a second (1.5 cm) in the lower outer quadrant; path report indicates both lesions are malignant

**C50.411 Malignant neoplasm of upper-outer quadrant of right female breast**  
**C50.511 Malignant neoplasm of lower-outer quadrant of right female breast**

*Explanation:* This patient has two distinct malignant lesions of right breast in adjacent quadrants. Because the lesions are not contiguous, two codes are reported.

Malignant neoplasm of ectopic tissue

Malignant neoplasms of ectopic tissue are to be coded to the site of origin mentioned, e.g., ectopic pancreatic malignant neoplasms involving the stomach are coded to malignant neoplasm of pancreas, unspecified (C25.9).

The neoplasm table in the Alphabetic Index should be referenced first. However, if the histological term is documented, that term should be referenced first, rather than going immediately to the Neoplasm Table, in order to determine which column in the Neoplasm Table is appropriate. For example, if the documentation indicates "adenoma," refer to the term in the Alphabetic Index to review the entries under this term and the instructional note to "see also neoplasm, by site, benign." The table provides the proper code based on the type of neoplasm and the site. It is important to select the proper column in the table that corresponds to the type of neoplasm. The Tabular List should then be referenced to verify that the correct code has been selected from the table and that a more specific site code does not exist.

See Section I.C.21. Factors influencing health status and contact with health services, Status, for information regarding Z15.0, codes for genetic susceptibility to cancer.

#### a. Admission/Encounter for treatment of primary site

If the malignancy is chiefly responsible for occasioning the patient admission/encounter and treatment is directed at the primary site, designate the primary malignancy as the principal/first-listed diagnosis.

The only exception to this guideline is if the administration of chemotherapy, immunotherapy or external beam radiation therapy is chiefly responsible for occasioning the admission/encounter. In that case, assign the appropriate Z51.-- code as the first-listed or principal diagnosis, and the underlying diagnosis or problem for which the service is being performed as a secondary diagnosis.

#### b. Admission/Encounter for treatment of secondary site

When a patient is admitted because of a primary neoplasm with metastasis and treatment is directed toward the secondary site only, the secondary

neoplasm is designated as the principal diagnosis even though the primary malignancy is still present.

Patient with primary prostate cancer with metastasis to lungs admitted for wedge resection of mass in right lung

**C78.01 Secondary malignant neoplasm of right lung**

**C61 Malignant neoplasm of prostate**

*Explanation:* Since the admission is for treatment of the lung metastasis, the secondary lung metastasis is sequenced before the primary prostate cancer.

#### c. Coding and sequencing of complications

Coding and sequencing of complications associated with the malignancies or with the therapy thereof are subject to the following guidelines:

##### 1) Anemia associated with malignancy

When admission/encounter is for management of an anemia associated with the malignancy, and the treatment is only for anemia, the appropriate code for the malignancy is sequenced as the principal or first-listed diagnosis followed by the appropriate code for the anemia (such as code D63.0, Anemia in neoplastic disease).

Patient is admitted for treatment of anemia in advanced colon cancer

**C18.9 Malignant neoplasm of colon, unspecified**

**D63.0 Anemia in neoplastic disease**

*Explanation:* Even though the admission was solely to treat the anemia, this guideline indicates that the code for the malignancy is sequenced first.

##### 2) Anemia associated with chemotherapy, immunotherapy and radiation therapy

When the admission/encounter is for management of an anemia associated with an adverse effect of the administration of chemotherapy or immunotherapy and the only treatment is for the anemia, the anemia code is sequenced first followed by the appropriate codes for the neoplasm and the adverse effect (T45.1X5, Adverse effect of antineoplastic and immunosuppressive drugs).

A 56-year-old Hispanic male with grade II follicular lymphoma involving multiple lymph node sites referred for blood transfusion to treat anemia due to chemotherapy

**D64.81 Anemia due to antineoplastic chemotherapy**

**C82.18 Follicular lymphoma grade II, lymph nodes of multiple sites**

**T45.1X5A Adverse effect of antineoplastic and immunosuppressive drugs, initial encounter**

*Explanation:* The code for the anemia is sequenced first followed by the code for the malignant neoplasm and lastly the code for the adverse effect.

When the admission/encounter is for management of an anemia associated with an adverse effect of radiotherapy, the anemia code should be sequenced first, followed by the appropriate neoplasm code and code Y84.2, Radiological procedure and radiotherapy as the cause of abnormal reaction of the patient, or of later complication, without mention of misadventure at the time of the procedure.

A 55-year-old male with a large malignant rectal tumor has been receiving external radiation therapy to shrink the tumor prior to planned surgery. He is admitted today for a blood transfusion to treat anemia related to radiation therapy.

**D64.89 Other specified anemias**

**C20 Malignant neoplasm of rectum**

**Y84.2 Radiological procedure and radiotherapy as the cause of abnormal reaction of the patient, or of later complication, without mention of misadventure at the time of the procedure**

*Explanation:* The code for the anemia is sequenced first, followed by the code for the malignancy, and lastly the code for the abnormal reaction due to radiotherapy.



✓4<sup>th</sup> **I72 Other aneurysm**

- INCLUDES** aneurysm (cirroid) (false) (ruptured)  
**EXCLUDES 2** acquired aneurysm (I77.0)  
 aneurysm (of) aorta (I71.-)  
 aneurysm (of) arteriovenous NOS (Q27.3-)  
 carotid artery dissection (I77.71)  
 cerebral (nonruptured) aneurysm (I67.1)  
 coronary aneurysm (I25.4)  
 coronary artery dissection (I25.42)  
 dissection of artery NEC (I77.79)  
 dissection of precerebral artery, congenital (nonruptured) (Q28.1)  
 heart aneurysm (I25.3)  
 iliac artery dissection (I77.72)  
 precerebral artery, congenital (nonruptured) (Q28.1)  
 pulmonary artery aneurysm (I28.1)  
 renal artery dissection (I77.73)  
 retinal aneurysm (H35.0)  
 ruptured cerebral aneurysm (I60.7)  
 varicose aneurysm (I77.0)  
 vertebral artery dissection (I77.74)

AHA: 2016,4Q,28-29

**I72.0 Aneurysm of carotid artery**

- Aneurysm of common carotid artery  
 Aneurysm of external carotid artery  
 Aneurysm of internal carotid artery, extracranial portion  
**EXCLUDES 1** aneurysm of internal carotid artery, intracranial portion (I67.1)  
 aneurysm of internal carotid artery NOS (I67.1)

**I72.1 Aneurysm of artery of upper extremity****I72.2 Aneurysm of renal artery****I72.3 Aneurysm of iliac artery****I72.4 Aneurysm of artery of lower extremity**

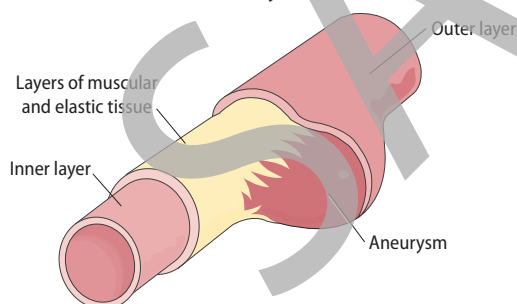
AHA: 2019,2Q,21

**I72.5 Aneurysm of other precerebral arteries**

- Aneurysm of basilar artery (trunk)  
**EXCLUDES 2** aneurysm of carotid artery (I72.0)  
 aneurysm of vertebral artery (I72.6)  
 dissection of carotid artery (I77.71)  
 dissection of other precerebral arteries (I77.75)  
 dissection of vertebral artery (I77.74)

**I72.6 Aneurysm of vertebral artery**

- EXCLUDES 2** dissection of vertebral artery (I77.74)

**I72.8 Aneurysm of other specified arteries****I72.9 Aneurysm of unspecified site****Aneurysm**✓4<sup>th</sup> **I73 Other peripheral vascular diseases**

- EXCLUDES 2** chilblains (T69.1)  
 frostbite (T33-T34)  
 immersion hand or foot (T69.0-)  
 spasm of cerebral artery (G45.9)

AHA: 2018,4Q,87

✓5<sup>th</sup> **I73.0 Raynaud's syndrome**

- Raynaud's disease  
 Raynaud's phenomenon (secondary)  
**DEF:** Constriction of the arteries of the digits caused by cold or by nerve or arterial damage and can be prompted by stress or emotion. Blood cannot reach the skin and soft tissues and the skin turns white with blue mottling.

**I73.00 Raynaud's syndrome without gangrene****I73.01 Raynaud's syndrome with gangrene**

CC MCC

**I73.1 Thromboangiitis obliterans [Buerger's disease]**

**DEF:** Inflammatory disease of the extremity blood vessels, mainly the lower blood vessels. This disease is associated with heavy tobacco use. The arteries are more affected than veins. It occurs primarily in young men and leads to tissue ischemia and gangrene.

✓5<sup>th</sup> **I73.8 Other specified peripheral vascular diseases**

- EXCLUDES 1** diabetic (peripheral) angiopathy (E08-E13 with .51-.52)

**I73.81 Erythromelalgia****I73.89 Other specified peripheral vascular diseases**

- Acrocyanosis  
 Erythrocyanosis  
 Simple acroparesthesia [Schultze's type]  
 Vasomotor acroparesthesia [Nothnagel's type]

**I73.9 Peripheral vascular disease, unspecified**

- Intermittent claudication  
 Peripheral angiopathy NOS  
 Spasm of artery  
**EXCLUDES 1** atherosclerosis of the extremities (I70.2-I70.7-)  
 AHA: 2018,2Q,7

✓4<sup>th</sup> **I74 Arterial embolism and thrombosis**

- INCLUDES** embolic infarction  
 embolic occlusion  
 thrombotic infarction  
 thrombotic occlusion

Code first:

embolism and thrombosis complicating abortion or ectopic or molar pregnancy (O00-O07, O08.2)  
 embolism and thrombosis complicating pregnancy, childbirth and the puerperium (O88.-)

- EXCLUDES 2** atheroembolism (I75.-)  
 basilar embolism and thrombosis (I63.0-I63.2, I65.1)  
 carotid embolism and thrombosis (I63.0-I63.2, I65.2)  
 cerebral embolism and thrombosis (I63.3-I63.5, I66.-)  
 coronary embolism and thrombosis (I21-I25)  
 mesenteric embolism and thrombosis (K55.0-)  
 ophthalmic embolism and thrombosis (H34.-)  
 precerebral embolism and thrombosis NOS (I63.0-I63.2, I65.9)  
 pulmonary embolism and thrombosis (I26.-)  
 renal embolism and thrombosis (N28.0)  
 retinal embolism and thrombosis (H34.-)  
 septic embolism and thrombosis (I76)  
 vertebral embolism and thrombosis (I63.0-I63.2, I65.0)

AHA: 2023,2Q,7

✓5<sup>th</sup> **I74.0 Embolism and thrombosis of abdominal aorta****I74.01 Saddle embolus of abdominal aorta**

MCC HCC

**I74.09 Other arterial embolism and thrombosis of abdominal aorta**

CC MCC

- Aortic bifurcation syndrome  
 Aortoiliac obstruction  
 Leriche's syndrome

✓5<sup>th</sup> **I74.1 Embolism and thrombosis of other and unspecified parts of aorta****I74.10 Embolism and thrombosis of unspecified parts of aorta**

CC HCC

**I74.11 Embolism and thrombosis of thoracic aorta**

CC HCC

**I74.19 Embolism and thrombosis of other parts of aorta**

CC HCC

**I74.2 Embolism and thrombosis of arteries of the upper extremities**

CC HCC

**I74.3 Embolism and thrombosis of arteries of the lower extremities**

CC HCC

**I74.4 Embolism and thrombosis of arteries of extremities, unspecified**

CC HCC

Peripheral arterial embolism NOS

**I74.5 Embolism and thrombosis of iliac artery**

CC HCC

**I74.8 Embolism and thrombosis of other arteries**

CC HCC

**I74.9 Embolism and thrombosis of unspecified artery**

CC HCC

✓4<sup>th</sup> **I75 Atheroembolism**

- INCLUDES** atherothrombotic microembolism  
 cholesterol embolism

✓5<sup>th</sup> **I75.0 Atheroembolism of extremities**✓6<sup>th</sup> **I75.01 Atheroembolism of upper extremity****I75.011 Atheroembolism of right upper extremity**

CC HCC

**N07.5 Hereditary nephropathy, not elsewhere classified with diffuse mesangiocapillary glomerulonephritis** CC

Hereditary nephropathy, not elsewhere classified with membranoproliferative glomerulonephritis, types 1 and 3, or NOS

**EXCLUDES 1** hereditary nephropathy, not elsewhere classified with C3 glomerulonephritis (N07.A)  
hereditary nephropathy, not elsewhere classified with C3 glomerulopathy (N07.A)

**N07.6 Hereditary nephropathy, not elsewhere classified with dense deposit disease**

Hereditary nephropathy, not elsewhere classified with C3 glomerulopathy with dense deposit disease  
Hereditary nephropathy, not elsewhere classified with membranoproliferative glomerulonephritis, type 2

**N07.7 Hereditary nephropathy, not elsewhere classified with diffuse crescentic glomerulonephritis**

Hereditary nephropathy, not elsewhere classified with extracapillary glomerulonephritis

**N07.8 Hereditary nephropathy, not elsewhere classified with other morphologic lesions**

Hereditary nephropathy, not elsewhere classified with proliferative glomerulonephritis NOS

**N07.9 Hereditary nephropathy, not elsewhere classified with unspecified morphologic lesions****N07.A Hereditary nephropathy, not elsewhere classified with C3 glomerulonephritis** CC

Hereditary nephropathy, not elsewhere classified with C3 glomerulopathy  
**EXCLUDES 1** hereditary nephropathy, not elsewhere classified (with C3 glomerulopathy) with dense deposit disease (N07.6)

**N08 Glomerular disorders in diseases classified elsewhere**

Glomerulonephritis

Nephritis

Nephropathy

Code first underlying disease, such as:

amyloidosis (E85.-)  
congenital syphilis (A50.5)  
cryoglobulinemia (D89.1)  
disseminated intravascular coagulation (D65)  
gout (M1A.-, M10.-)  
microscopic polyangiitis (M31.7)  
multiple myeloma (C90.0-)  
sepsis (A40.0-A41.9)  
sickle-cell disease (D57.0-D57.8)

**EXCLUDES 1** glomerulonephritis, nephritis and nephropathy (in):  
antiglomerular basement membrane disease (M31.0)  
diabetes (E08-E13 with .21)  
gonococcal (A54.21)  
Goodpasture's syndrome (M31.0)  
hemolytic-uremic syndrome (D59.3-)  
lupus (M32.14)  
mumps (B26.83)  
syphilis (A52.75)  
systemic lupus erythematosus (M32.14)  
Wegener's granulomatosis (M31.31)  
pyelonephritis in diseases classified elsewhere (N16)  
renal tubulo-interstitial disorders classified elsewhere (N16)

**Renal tubulo-interstitial diseases (N10-N16)**

**INCLUDES** pyelonephritis

**EXCLUDES 1** pyeloureteritis cystica (N28.85)

**N10 Acute pyelonephritis** CC H6

Acute infectious interstitial nephritis  
Acute pyelitis  
Acute tubulo-interstitial nephritis  
Hemoglobin nephrosis  
Myoglobin nephrosis

Use additional code (B95-B97), to identify infectious agent

AHA: 2020,3Q,25; 2019,3Q,13

**N11 Chronic tubulo-interstitial nephritis**

**INCLUDES** chronic infectious interstitial nephritis  
chronic pyelitis  
chronic pyelonephritis

Use additional code (B95-B97), to identify infectious agent

**N11.0 Nonobstructive reflux-associated chronic pyelonephritis**

Pyelonephritis (chronic) associated with (vesicoureteral) reflux

**EXCLUDES 1** vesicoureteral reflux NOS (N13.70)

**N11.1 Chronic obstructive pyelonephritis** CC

Pyelonephritis (chronic) associated with anomaly of pelviureteric junction

Pyelonephritis (chronic) associated with anomaly of pyeloureteric junction

Pyelonephritis (chronic) associated with crossing of vessel

Pyelonephritis (chronic) associated with kinking of ureter

Pyelonephritis (chronic) associated with obstruction of ureter

Pyelonephritis (chronic) associated with stricture of pelviureteric junction

Pyelonephritis (chronic) associated with stricture of ureter

**EXCLUDES 1** calculous pyelonephritis (N20.9)

obstructive uropathy (N13.-)

**N11.8 Other chronic tubulo-interstitial nephritis** CC

Nonobstructive chronic pyelonephritis NOS

**N11.9 Chronic tubulo-interstitial nephritis, unspecified** CC H6

Chronic interstitial nephritis NOS

Chronic pyelitis NOS

Chronic pyelonephritis NOS

**N12 Tubulo-interstitial nephritis, not specified as acute or chronic** CC H6

Interstitial nephritis NOS

Pyelitis NOS

Pyelonephritis NOS

**EXCLUDES 1** calculous pyelonephritis (N20.9)

**N13 Obstructive and reflux uropathy**

**EXCLUDES 2** calculus of kidney and ureter without hydronephrosis (N20.-)  
congenital obstructive defects of renal pelvis and ureter (Q62.0-Q62.3)

hydronephrosis with ureteropelvic junction obstruction (Q62.11)

obstructive pyelonephritis (N11.1)

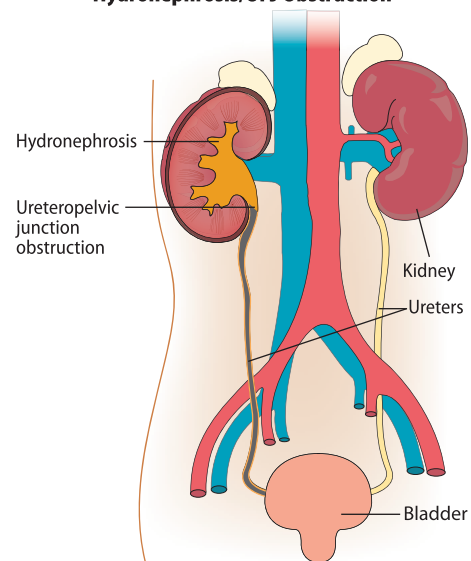
**DEF:** Hydronephrosis: Distension of the kidney caused by an accumulation of urine that cannot flow out due to an obstruction that may be caused by conditions such as kidney stones or vesicoureteral reflux.

**N13.0 Hydronephrosis with ureteropelvic junction obstruction** CC

Hydronephrosis due to acquired occlusion of ureteropelvic junction

**EXCLUDES 2** hydronephrosis with ureteropelvic junction obstruction due to calculus (N13.2)

AHA: 2016,4Q,43

**Hydronephrosis/UPJ Obstruction**

**Q18.2 Other branchial cleft malformations**

PE

Branchial cleft malformation NOS  
Cervical auricle  
Otocephaly

**Q18.3 Webbing of neck**

PE

Pterygium colli

**DEF:** Congenital malformation characterized by a thick, triangular skinfold that stretches from the lateral side of the neck across the shoulder. It is associated with genetic conditions such as Turner's and Noonan's syndromes.

**Q18.4 Macrostomia**

PE

**DEF:** Rare congenital craniofacial bilateral or unilateral anomaly of the mouth due to malformed maxillary and mandibular processes. It results in an abnormally large mouth extending toward the ear.

**Q18.5 Microstomia**

PE

**Q18.6 Macrocheilia**

PE

Hypertrophy of lip, congenital

**Q18.7 Microcheilia**

PE

**Q18.8 Other specified congenital malformations of face and neck**

PE

Medial cyst of face and neck  
Medial fistula of face and neck  
Medial sinus of face and neck

**Q18.9 Congenital malformation of face and neck, unspecified**

PE

Congenital anomaly NOS of face and neck

**Congenital malformations of the circulatory system (Q20–Q28)****✓4 Q20 Congenital malformations of cardiac chambers and connections**

**EXCLUDES 1** dextrocardia with situs inversus (Q89.3)

mirror-image atrial arrangement with situs inversus (Q89.3)

**Q20.0 Common arterial trunk**

MCC PE

Persistent truncus arteriosus

**EXCLUDES 1** aortic septal defect (Q21.4)

**Q20.1 Double outlet right ventricle**

MCC PE

Taussig-Bing syndrome

**Q20.2 Double outlet left ventricle**

MCC PE

**Q20.3 Discordant ventriculoarterial connection**

MCC PE

Dextrotransposition of aorta  
Transposition of great vessels (complete)

**Q20.4 Double inlet ventricle**

MCC PE

Common ventricle  
Cor triloculare biatriatum  
Single ventricle

**Q20.5 Discordant atrioventricular connection**

CC PE

Corrected transposition  
Levotransposition  
Ventricular inversion

**Q20.6 Isomerism of atrial appendages**

PE

Isomerism of atrial appendages with asplenia or polysplenia

**Q20.8 Other congenital malformations of cardiac chambers and connections**

PE

Cor binoculare

**Q20.9 Congenital malformation of cardiac chambers and connections, unspecified**

PE

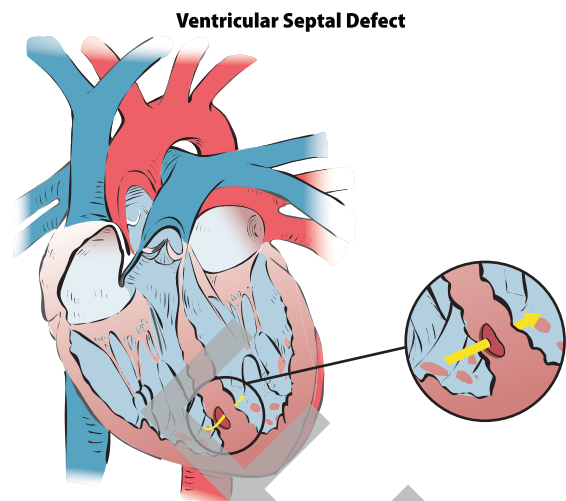
**✓4 Q21 Congenital malformations of cardiac septa**

**EXCLUDES 1** acquired cardiac septal defect (I51.0)

**Q21.0 Ventricular septal defect**

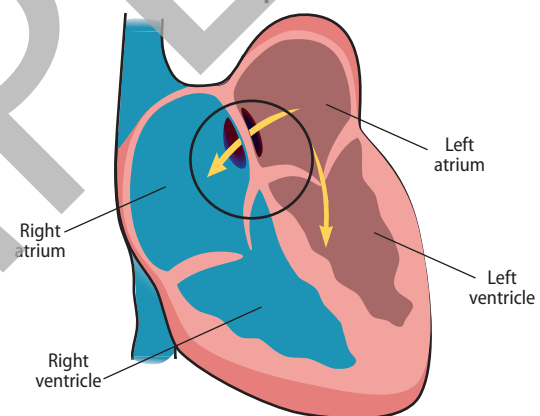
CC PE

Roger's disease

**Ventricular Septal Defect****✓5 Q21.1 Atrial septal defect**

**EXCLUDES 2** ostium primum atrial septal defect (type I) (Q21.20)

AHA: 2022,4Q,39-40

**Atrial Septal Defect****Q21.10 Atrial septal defect, unspecified**

CC PE

**Q21.11 Secundum atrial septal defect**

CC PE

Fenestrated atrial septum  
Patent or persistent ostium secundum defect (type II)

**Q21.12 Patent foramen ovale**

CC PE

Persistent foramen ovale

**Q21.13 Coronary sinus atrial septal defect**

CC PE

Coronary sinus defect  
Unroofed coronary sinus

**Q21.14 Superior sinus venosus atrial septal defect**

CC PE

Superior vena cava type atrial septal defect

**Q21.15 Inferior sinus venosus atrial septal defect**

CC PE

Inferior vena cava type atrial septal defect

**Q21.16 Sinus venosus atrial septal defect, unspecified**

CC PE

Sinus venosus defect, NOS

**Q21.19 Other specified atrial septal defect**

CC PE

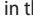
Common atrium  
Other specified atrial septal abnormality

<p><b>✓ 5<sup>th</sup> T80.419 Rh incompatibility with hemolytic transfusion reaction, unspecified</b> <b>CC PE</b> Rh incompatibility with hemolytic transfusion reaction at unspecified time after transfusion Hemolytic transfusion reaction (HTR) due to Rh incompatibility NOS</p> <p><b>✓ x 7<sup>th</sup> T80.49 Other Rh incompatibility reaction due to transfusion of blood or blood products</b> <b>CC PE</b> Delayed serologic transfusion reaction (DSTR) from Rh incompatibility Other reaction to Rh incompatible blood transfusion</p> <p><b>✓ 5<sup>th</sup> T80.A Non-ABO incompatibility reaction due to transfusion of blood or blood products</b> Reaction due to incompatibility of minor antigens (Duffy) (Kell) (Kidd) (Lewis) (M) (N) (P) (S)</p> <p><b>✓ x 7<sup>th</sup> T80.A0 Non-ABO incompatibility reaction due to transfusion of blood or blood products, unspecified</b> <b>CC PE</b> Non-ABO antigen incompatibility reaction from transfusion NOS</p> <p><b>✓ 6<sup>th</sup> T80.A1 Non-ABO incompatibility with hemolytic transfusion reaction</b></p> <p><b>✓ 7<sup>th</sup> T80.A10 Non-ABO incompatibility with acute hemolytic transfusion reaction</b> <b>CC PE</b> Acute hemolytic transfusion reaction (AHTR) due to non-ABO incompatibility Non-ABO incompatibility with hemolytic transfusion reaction less than 24 hours after transfusion</p> <p><b>✓ 7<sup>th</sup> T80.A11 Non-ABO incompatibility with delayed hemolytic transfusion reaction</b> <b>CC PE</b> Delayed hemolytic transfusion reaction (DHTR) due to non-ABO incompatibility Non-ABO incompatibility with hemolytic transfusion reaction 24 or more hours after transfusion</p> <p><b>✓ 7<sup>th</sup> T80.A19 Non-ABO incompatibility with hemolytic transfusion reaction, unspecified</b> <b>CC PE</b> Hemolytic transfusion reaction (HTR) due to non-ABO incompatibility NOS Non-ABO incompatibility with hemolytic transfusion reaction at unspecified time after transfusion</p> <p><b>✓ x 7<sup>th</sup> T80.A9 Other non-ABO incompatibility reaction due to transfusion of blood or blood products</b> <b>CC PE</b> Delayed serologic transfusion reaction (DSTR) from non-ABO incompatibility Other reaction to non-ABO incompatible blood transfusion</p> <p><b>✓ 5<sup>th</sup> T80.5 Anaphylactic reaction due to serum</b> Allergic shock due to serum Anaphylactic shock due to serum Anaphylactoid reaction due to serum Anaphylaxis due to serum <b>EXCLUDES 1</b> ABO incompatibility reaction due to transfusion of blood or blood products (T80.3-) allergic reaction or shock NOS (T78.2) anaphylactic reaction or shock NOS (T78.2) anaphylactic reaction or shock due to adverse effect of correct medicinal substance properly administered (T88.6) other serum reaction (T80.6-) <b>DEF:</b> Life-threatening hypersensitivity to a foreign serum causing respiratory distress, vascular collapse, and shock.</p> <p><b>✓ x 7<sup>th</sup> T80.51 Anaphylactic reaction due to administration of blood and blood products</b> <b>CC PE</b></p> <p><b>✓ x 7<sup>th</sup> T80.52 Anaphylactic reaction due to vaccination</b> <b>CC PE</b> <b>AHA:</b> 2021,1Q,43</p> <p><b>✓ x 7<sup>th</sup> T80.59 Anaphylactic reaction due to other serum</b> <b>CC PE</b></p>	<p><b>✓ 5<sup>th</sup> T80.6 Other serum reactions</b> Intoxication by serum Protein sickness Serum rash Serum sickness Serum urticaria <b>EXCLUDES 2</b> serum hepatitis (B16-B19) <b>DEF:</b> Serum sickness: Hypersensitivity to a foreign serum that causes fever, hives, swelling, and lymphadenopathy.</p> <p><b>✓ x 7<sup>th</sup> T80.61 Other serum reaction due to administration of blood and blood products</b> <b>CC PE</b></p> <p><b>✓ x 7<sup>th</sup> T80.62 Other serum reaction due to vaccination</b> <b>CC PE</b> <b>AHA:</b> 2021,1Q,42</p> <p><b>✓ x 7<sup>th</sup> T80.69 Other serum reaction due to other serum</b> <b>CC PE</b> Code also, if applicable, arthropathy in hypersensitivity reactions classified elsewhere (M36.4)</p> <p><b>✓ 5<sup>th</sup> T80.8 Other complications following infusion, transfusion and therapeutic injection</b></p> <p><b>✓ 6<sup>th</sup> T80.81 Extravasation of vesicant agent</b> Infiltration of vesicant agent</p> <p><b>✓ 7<sup>th</sup> T80.810 Extravasation of vesicant antineoplastic chemotherapy</b> <b>CC PE</b> Infiltration of vesicant antineoplastic chemotherapy</p> <p><b>✓ 7<sup>th</sup> T80.818 Extravasation of other vesicant agent</b> <b>CC PE</b> Infiltration of other vesicant agent</p> <p><b>✓ x 7<sup>th</sup> T80.82 Complication of immune effector cellular therapy</b> <b>PE</b> Complication of chimeric antigen receptor (CAR-T) cell therapy Complication of IEC therapy Use additional code to identify the specific complication, such as: cytokine release syndrome (D89.83-) immune effector cell-associated neurotoxicity syndrome (G92.0-) <b>EXCLUDES 2</b> ▶ adverse effect of immune checkpoint inhibitors and immunostimulant drugs (T45.AX5) ◀ complication of bone marrow transplant (T86.0) complication of stem cell transplant (T86.5) <b>AHA:</b> 2021,4Q,31</p> <p><b>✓ x 7<sup>th</sup> T80.89 Other complications following infusion, transfusion and therapeutic injection</b> <b>PE</b> Delayed serologic transfusion reaction (DSTR), unspecified incompatibility Use additional code to identify graft-versus-host reaction, if applicable, (D89.81-) <b>AHA:</b> 2020,4Q,14</p> <p><b>✓ 5<sup>th</sup> T80.9 Unspecified complication following infusion, transfusion and therapeutic injection</b></p> <p><b>✓ x 7<sup>th</sup> T80.90 Unspecified complication following infusion and therapeutic injection</b> <b>PE</b></p> <p><b>✓ 6<sup>th</sup> T80.91 Hemolytic transfusion reaction, unspecified incompatibility</b> <b>EXCLUDES 1</b> ABO incompatibility with hemolytic transfusion reaction (T80.31-) non-ABO incompatibility with hemolytic transfusion reaction (T80.A1-) Rh incompatibility with hemolytic transfusion reaction (T80.41-)</p> <p><b>✓ 7<sup>th</sup> T80.910 Acute hemolytic transfusion reaction, unspecified incompatibility</b> <b>CC PE</b></p> <p><b>✓ 7<sup>th</sup> T80.911 Delayed hemolytic transfusion reaction, unspecified incompatibility</b> <b>CC PE</b></p> <p><b>✓ 7<sup>th</sup> T80.919 Hemolytic transfusion reaction, unspecified incompatibility, unspecified as acute or delayed</b> <b>CC PE</b> Hemolytic transfusion reaction NOS</p> <p><b>✓ x 7<sup>th</sup> T80.92 Unspecified transfusion reaction</b> <b>PE</b> Transfusion reaction NOS</p>
--	--



## Appendix G: Hospital Acquired Conditions

Hospital-acquired conditions (HACs) are conditions considered reasonably preventable through the application of evidence-based guidelines. These conditions, in and of themselves, are either a complication or comorbidity (CC) or major complication or comorbidity (MCC) that as a secondary diagnosis will move the MS-DRG assignment from a lower-paying MS-DRG to a higher-paying MS-DRG. However, if these conditions are not present on admission (meaning they developed during the hospital stay), the CC or MCC designation is nullified and the case will not group to the higher-paying MS-DRG based solely upon the reporting of the HAC code.

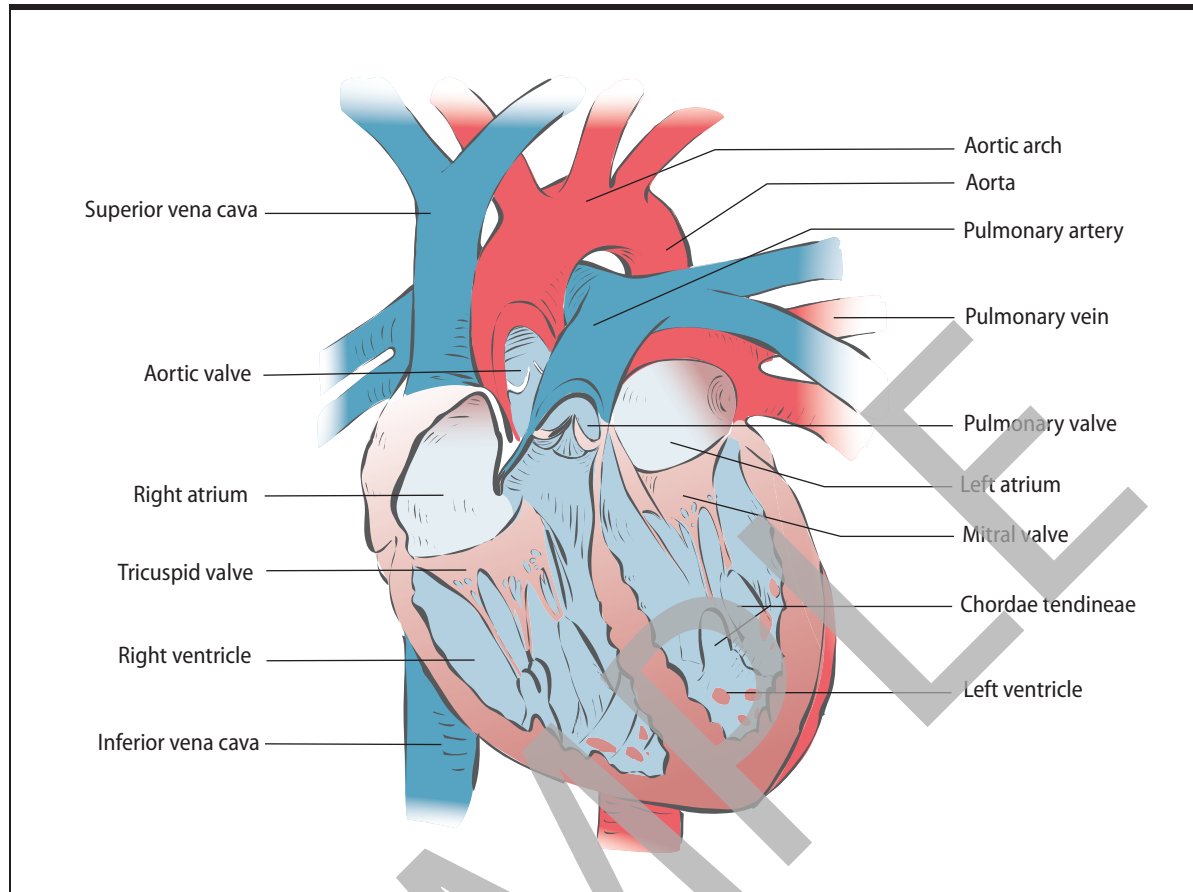
HACs are grouped into 14 categories. ICD-10-CM codes in the tabular section of this book that are grouped to one of these HAC categories are identified by an icon specific to that category. As many of these HACs are conditional, this resource provides any additional stipulations that may be required before the code can be considered an HAC. For example, code I26.02 has an  indicating it falls in the HAC 10 category for Deep Vein Thrombosis (DVT) or Pulmonary Embolism (PE) with Total Knee or Hip Replacement. However, I26.02 is not, by itself, a HAC. There must also be a specific ICD-10-PCS code, such as 0SR9019 Replacement of Right Hip Joint with Metal Synthetic Substitute, Cemented, Open Approach, applied in order for I26.02 to act as a HAC.

**Note:** The resource used to compile this list is based on the proposed, version 42, MS-DRG Grouper software and Definitions Manual files published with the fiscal 2025 IPPS proposed rule. The final, version 42, MS-DRG Grouper files and MS-DRG Definitions Manual files can be found at the following: <https://www.cms.gov/Medicare/Medicare-Fee-for-Service-Payment/AcuteInpatientPPS/PPS-Regulations-and-Notices.html>.

<b>HAC 01: Foreign Object Retained After Surgery</b>	<b>HAC 03: Blood Incompatibility</b>	<b>HAC 05: Falls and Trauma</b>						
Secondary diagnosis not POA:	Secondary diagnosis not POA:	Secondary diagnosis not POA:						
T81.500A	T80.30XA	M99.10	S02.40BA	S02.81XA	S06.322A	S06.384A	S06.899A	S12.150B
T81.501A	T80.310A	M99.11	S02.40BB	S02.81XB	S06.323A	S06.385A	S06.89AA	S12.151A
T81.502A	T80.311A	M99.18	S02.40CA	S02.82XA	S06.324A	S06.386A	S06.8A0A	S12.151B
T81.503A	T80.319A	S02.0XXA	S02.40CB	S02.82XB	S06.325A	S06.387A	S06.8A1A	S12.190A
T81.504A	T80.39XA	S02.0XXB	S02.40DA	S02.831A	S06.326A	S06.388A	S06.8A2A	S12.190B
T81.505A		S02.101A	S02.40DB	S02.831B	S06.327A	S06.389A	S06.8A3A	S12.191A
T81.506A	<b>HAC 04: Stage III and IV Pressure Ulcers</b>	S02.101B	S02.40EA	S02.832A	S06.328A	S06.38AA	S06.8A4A	S12.191B
T81.507A	Secondary diagnosis not POA:	S02.102A	S02.40EB	S02.832B	S06.329A	S06.4X0A	S06.8A5A	S12.200A
T81.508A		S02.102B	S02.40FA	S02.839A	S06.32AA	S06.4X1A	S06.8A6A	S12.200B
T81.509A		S02.109A	S02.40FB	S02.839B	S06.330A	S06.4X2A	S06.8A7A	S12.201A
T81.510A		S02.109B	S02.411A	S02.841A	S06.331A	S06.4X3A	S06.8A8A	S12.201B
T81.511A	L89.003	S02.110A	S02.411B	S02.841B	S06.332A	S06.4X4A	S06.8A9A	S12.230A
T81.512A	L89.004	S02.111A	S02.412A	S02.842A	S06.333A	S06.4X5A	S06.8AAA	S12.230B
T81.513A	L89.013	S02.111B	S02.412B	S02.842B	S06.334A	S06.4X6A	S06.9X1A	S12.231A
T81.514A	L89.014	S02.112A	S02.413A	S02.849A	S06.335A	S06.4X7A	S06.9X2A	S12.231B
T81.515A	L89.023	S02.112B	S02.413B	S02.849B	S06.336A	S06.4X8A	S06.9X3A	S12.24XA
T81.516A	L89.024	S02.113A	S02.42XA	S02.85XA	S06.337A	S06.4X9A	S06.9X4A	S12.24XB
T81.517A	L89.103	S02.113B	S02.42XB	S02.85XB	S06.338A	S06.4XAA	S06.9X5A	S12.250A
T81.518A	L89.104	S02.118A	S02.600A	S02.91XA	S06.339A	S06.5X0A	S06.9X6A	S12.250B
T81.519A	L89.105	S02.118B	S02.600B	S02.91XB	S06.33AA	S06.5X1A	S06.9X7A	S12.251A
T81.520A	L89.113	S02.119A	S02.601A	S02.92XA	S06.340A	S06.5X2A	S06.9X8A	S12.251B
T81.521A	L89.114	S02.119B	S02.601B	S02.92XB	S06.341A	S06.5X3A	S06.9X9A	S12.290A
T81.522A	L89.123	S02.11AA	S02.602A	S06.0X1A	S06.342A	S06.5X4A	S06.9XAA	S12.290B
T81.523A	L89.124	S02.11AB	S02.602B	S06.0X9A	S06.343A	S06.5X5A	S07.0XXA	S12.291A
T81.524A	L89.133	S02.11BA	S02.609A	S06.0XAA	S06.344A	S06.5X6A	S07.1XXA	S12.291B
T81.525A	L89.144	S02.11BB	S02.609B	S06.1X1A	S06.345A	S06.5X7A	S07.8XXA	S12.300A
T81.526A	L89.153	S02.11CB	S02.610A	S06.1X2A	S06.346A	S06.5X8A	S07.9XXA	S12.300B
T81.527A	L89.154	S02.11DA	S02.610B	S06.1X3A	S06.347A	S06.5X9A	S12.000A	S12.301A
T81.528A	L89.203	S02.11DB	S02.611A	S06.1X4A	S06.348A	S06.5XAA	S12.000B	S12.301B
T81.529A	L89.204	S02.11EA	S02.611B	S06.1X5A	S06.349A	S06.6X0A	S12.001A	S12.330A
T81.530A	L89.213	S02.11EB	S02.612A	S06.1X6A	S06.34AA	S06.6X1A	S12.001B	S12.330B
T81.531A	L89.214	S02.11FA	S02.612B	S06.1X7A	S06.350A	S06.6X2A	S12.01XA	S12.331A
T81.532A	L89.223	S02.11FB	S02.620A	S06.1X8A	S06.351A	S06.6X3A	S12.01XB	S12.331B
T81.533A	L89.224	S02.11GA	S02.620B	S06.1X9A	S06.352A	S06.6X4A	S12.02XA	S12.34XA
T81.534A	L89.303	S02.11GB	S02.621A	S06.1XAA	S06.353A	S06.6X5A	S12.02XB	S12.34XB
T81.535A	L89.304	S02.11HA	S02.621B	S06.2X1A	S06.354A	S06.6X6A	S12.030A	S12.350A
T81.536A	L89.313	S02.11HB	S02.622A	S06.2X2A	S06.355A	S06.6X7A	S12.030B	S12.350B
T81.537A	L89.314	S02.11IB	S02.622B	S06.2X3A	S06.356A	S06.6X8A	S12.031A	S12.351A
T81.538A	L89.323	S02.121A	S02.630A	S06.2X4A	S06.357A	S06.6X9A	S12.031B	S12.351B
T81.539A	L89.324	S02.121B	S02.630B	S06.2X5A	S06.358A	S06.6XAA	S12.040A	S12.390A
T81.590A	L89.43	S02.122A	S02.631A	S06.2X6A	S06.359A	S06.811A	S12.040B	S12.390B
T81.591A	L89.44	S02.122B	S02.631B	S06.2X7A	S06.35AA	S06.812A	S12.041A	S12.391A
T81.592A	L89.503	S02.129A	S02.632A	S06.2X8A	S06.360A	S06.813A	S12.041B	S12.391B
T81.593A	L89.504	S02.129B	S02.632B	S06.2X9A	S06.361A	S06.814A	S12.090A	S12.400A
T81.594A	L89.513	S02.19XA	S02.640A	S06.2XAA	S06.362A	S06.815A	S12.090B	S12.400B
T81.595A	L89.514	S02.19XB	S02.640B	S06.301A	S06.363A	S06.816A	S12.091A	S12.401A
T81.596A	L89.515	S02.2XXA	S02.641A	S06.302A	S06.364A	S06.817A	S12.091B	S12.401B
T81.597A	L89.523	S02.30XA	S02.641B	S06.303A	S06.365A	S06.818A	S12.100A	S12.430A
T81.598A	L89.524	S02.30XB	S02.642A	S06.304A	S06.366A	S06.819A	S12.100B	S12.430B
T81.599A	L89.603	S02.31XA	S02.642B	S06.305A	S06.367A	S06.81AA	S12.101A	S12.431A
T81.60XA	L89.604	S02.31XB	S02.650A	S06.306A	S06.368A	S06.821A	S12.101B	S12.431B
T81.61XA	L89.613	S02.32XA	S02.650B	S06.307A	S06.369A	S06.822A	S12.110A	S12.44XA
T81.69XA	L89.614	S02.32XB	S02.651A	S06.308A	S06.36AA	S06.823A	S12.110B	S12.44XB
	L89.623	S02.400A	S02.651B	S06.309A	S06.370A	S06.824A	S12.111A	S12.450A
	L89.624	S02.400B	S02.652A	S06.30AA	S06.371A	S06.825A	S12.111B	S12.450B
	L89.813	S02.401A	S02.652B	S06.310A	S06.372A	S06.826A	S12.112A	S12.451A
	L89.814	S02.401B	S02.66XA	S06.311A	S06.373A	S06.827A	S12.112B	S12.451B
	L89.893	S02.402A	S02.66XB	S06.312A	S06.374A	S06.828A	S12.120A	S12.490A
	L89.894	S02.402B	S02.670A	S06.313A	S06.375A	S06.829A	S12.120B	S12.490B
	L89.93	S02.40AA	S02.670B	S06.314A	S06.376A	S06.82AA	S12.121A	S12.491A
	L89.94	S02.40AB	S02.671A	S06.315A	S06.377A	S06.891A	S12.121B	S12.491B
			S02.671B	S06.316A	S06.378A	S06.892A	S12.130A	S12.500A
			S02.672A	S06.317A	S06.379A	S06.893A	S12.130B	S12.500B
			S02.672B	S06.318A	S06.37AA	S06.894A	S12.131A	S12.501A
			S02.69XA	S06.319A	S06.380A	S06.895A	S12.131B	S12.501B
			S02.69XB	S06.31AA	S06.381A	S06.896A	S12.14XA	S12.530A
			S02.80XA	S06.320A	S06.382A	S06.897A	S12.14XB	S12.530B
			S02.80XB	S06.321A	S06.383A	S06.898A	S12.150A	S12.531A

## Chapter 9. Diseases of the Circulatory System (I00–I99)

### Anatomy of the Heart



### Heart Cross Section

